



Classic Tracker Ltd.

t: +44 (0)800 433 23 43  
w: [www.classic-tracker.com](http://www.classic-tracker.com)  
e: [info@classic-tracker.com](mailto:info@classic-tracker.com)

## Classic Tracker Quick Start Guide

### Stolen Vehicle Procedure

1. Report the theft to the police, informing them that the vehicle has a Classic Tracker fitted and give them our phone number. Make a note of your police crime number.
2. Call Classic Tracker with the crime number, your name, the vehicle registration number and/or tracker serial number.

We will liaise with the police and once they have tracked the vehicle we will inform you.

In the event of theft/emergency please call 0800 433 23 43

## 1. MY CLASSIC TRACKER web portal

To log in on your desktop or laptop, please visit: <http://map.classic-tracker.co.uk/>

Following the registration of your vehicle on our website, you will have received login credentials to Classic Tracker.

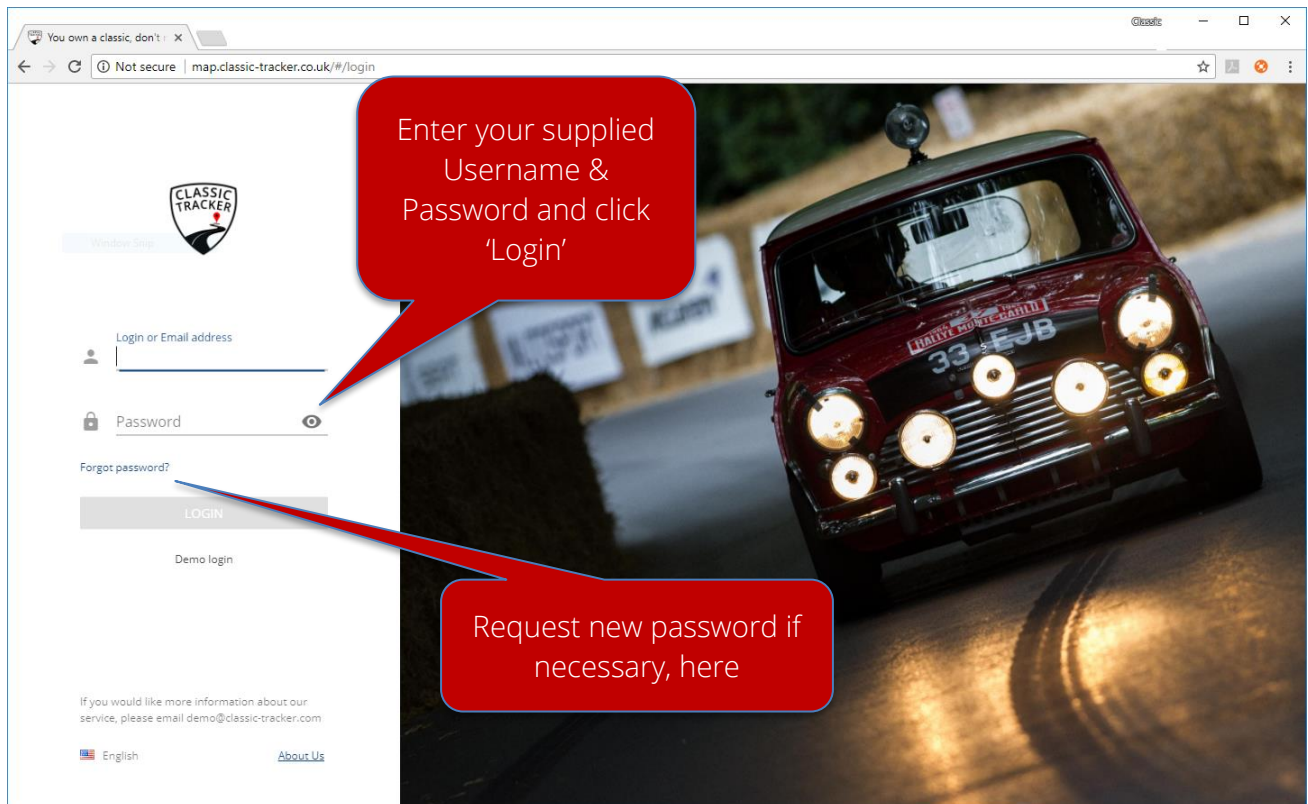
Username: `your.email@address.com`

Password: `[provided by Classic Tracker following registration]`

These login-credentials can be used for logging into either the CLASSIC TRACKER web portal, or the X-GPS Mobile App.

# Classic Tracker Quick Start Guide

v4.2 290925



The image shows a web browser window displaying the login page for Classic Tracker. The browser's address bar shows the URL `map.classic-tracker.co.uk/#/login`. The page features the Classic Tracker logo, a 'Window Title' bar, and a login form with the following elements:

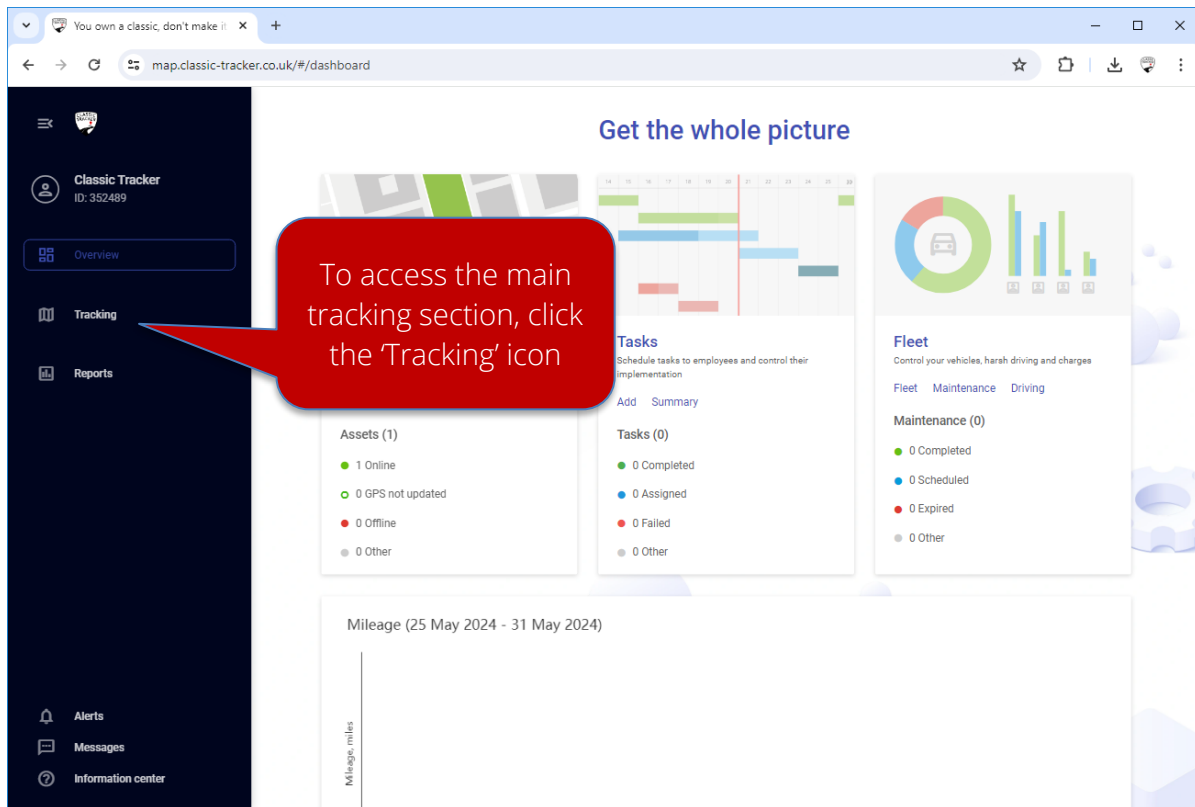
- A text input field labeled 'Login or Email address'.
- A password input field labeled 'Password' with a toggle icon.
- A link labeled 'Forgot password?'.
- A 'LOGIN' button.
- A 'Demo login' link.

Two red callout boxes provide instructions:

- The first callout, pointing to the login form, says: "Enter your supplied Username & Password and click 'Login'".
- The second callout, pointing to the 'Forgot password?' link, says: "Request new password if necessary, here".

The background of the page is a photograph of a classic red car with headlights on, driving on a road at night.

You will be taken to an overview screen as follows:

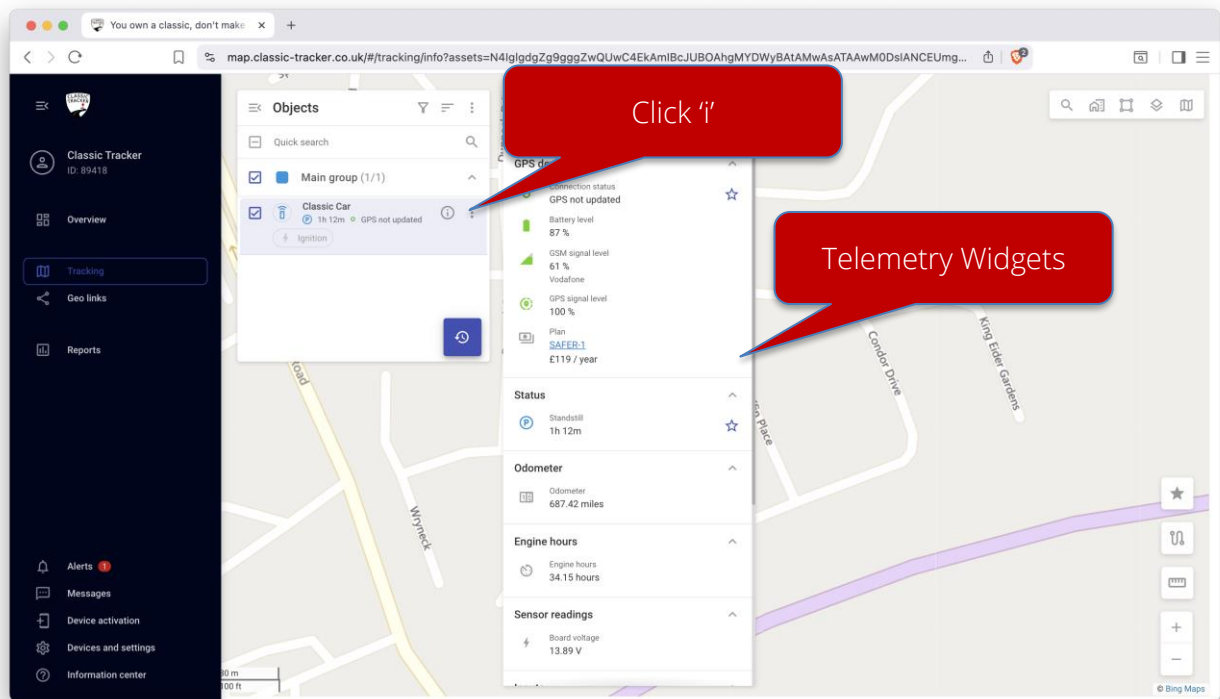


Click on the 'Tracking' icon to continue.

## 1.1 Main Tracking Section

This main window presents a wide range of information including vehicle location & status. Note that clicking on the Tracking icon anytime will always return you to this main window.

Once displayed, please click the small 'i' icon next to your vehicle to bring up the telemetry widget screen.

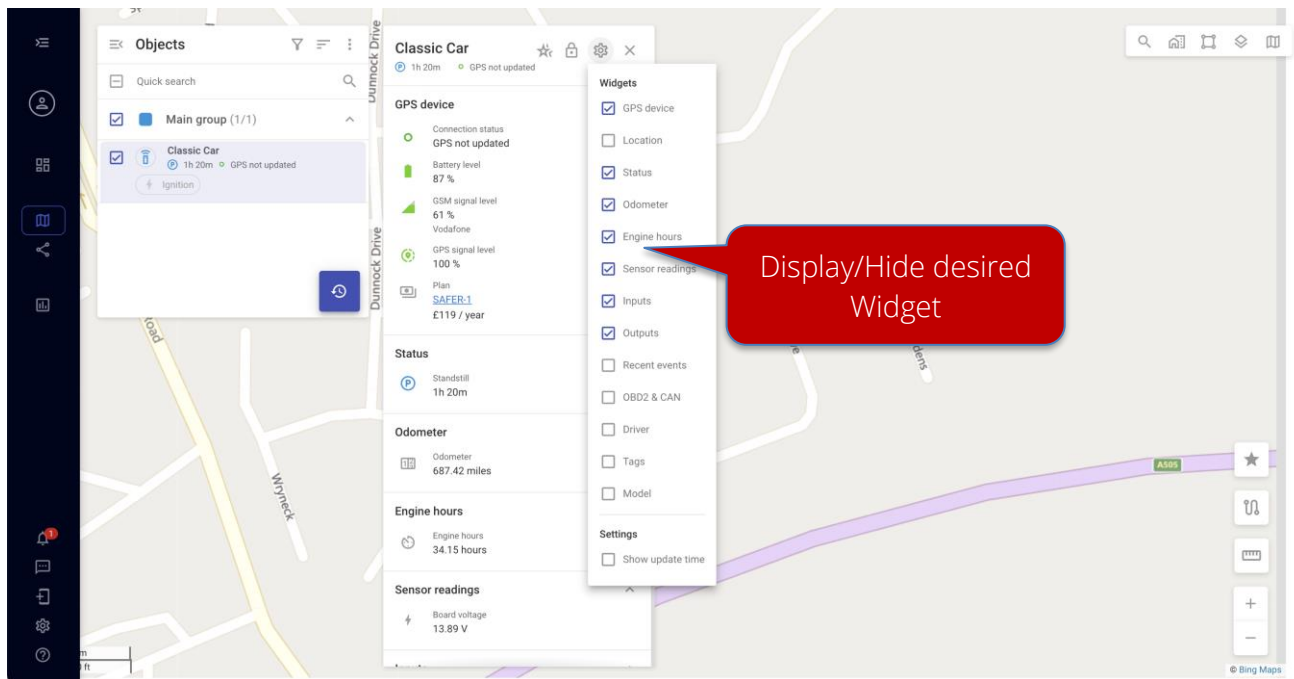


### 1.1.1 Telemetry Widget

This panel displays all operational statuses of your vehicle and Classic Tracker; plus allows you to remotely control additional accessories which may be optionally fit to your vehicle. For example, remote vehicle immobiliser.

## 1.1.2 Display/Hide Widgets

Some of the displayed widgets may/may not be applicable to your Classic Tracker service. You can select/change which widgets you would like displayed at any time by clicking on the GEAR icon at the top of the Widgets panel. Once selected simply select which Widgets you would like to display/hide, using the tick boxes to select.







Each 'widget' displays different status detail. Clicking on a specific widget displays more information on that particular telemetry component. **Note that if the tracker has been in sleep mode, the status information will be historic, i.e. the last time the tracker was awake:**

- **Tracker Status**, Tracker Model/IMEI, Status (see 1.2), tracker battery and GSM connection strength.
- **Location**: Lat & Long, Received GPS Signal Strength and last reported address
- **Tariff Plan**: Details of your tariff and next payment date.
- **Sensor Readings**: Board Voltage refers to the terminal voltage of your vehicle's battery.
- **Odometer**: Mileage based on GPS-mileage following tracker installation
- **Engine Hours**: Based on how long the ignition has been switch on for.
- **Inputs**: Ignition Status (glows green when vehicle ignition is on)
- **Outputs**: Used to remotely control vehicle immobiliser. Please see separate section later.
- **Recent Events**: A catalogue of any events which may have occurred.
- **OBD2 & CAN**: Not used by Classic Tracker service

## 1.2 Tracker Status

The colour of the circle near to the object name displays the current status of the device.

	Location is fixed, device is online	Has GSM, Has GPS
 or 	Location is not fixed or device is online but entered into GPS sleep mode	Has GSM, No GPS
	Device is offline having entered into battery preservation mode.	No GSM, No GPS

### 1.2.1 Battery Preservation

In order to operate as a trusted tracking device within a classic vehicle (which is often rarely used), Classic Tracker enters into GPS sleep mode after 5 minutes of movement inactivity (no movement with ignition off). Classic Tracker enters into a further 'offline' mode after approximately 10 minutes of not sending any further status updates. The tracker 'awakes' whenever physical movement or vehicle ignition is sensed.

## 1.3 SafeZones (Geofences)

These are configured by us when you register your tracker. However, we are able to configure multiple SafeZones at no additional cost. Please contact us with your requirements.



SafeZones can be viewed by clicking on the  icon, at the top right-hand of the screen.

## 1.4 Alerts

The Classic Tracker continually monitors different aspects of your vehicle. When a particular set of conditions is met, an alert is sent.

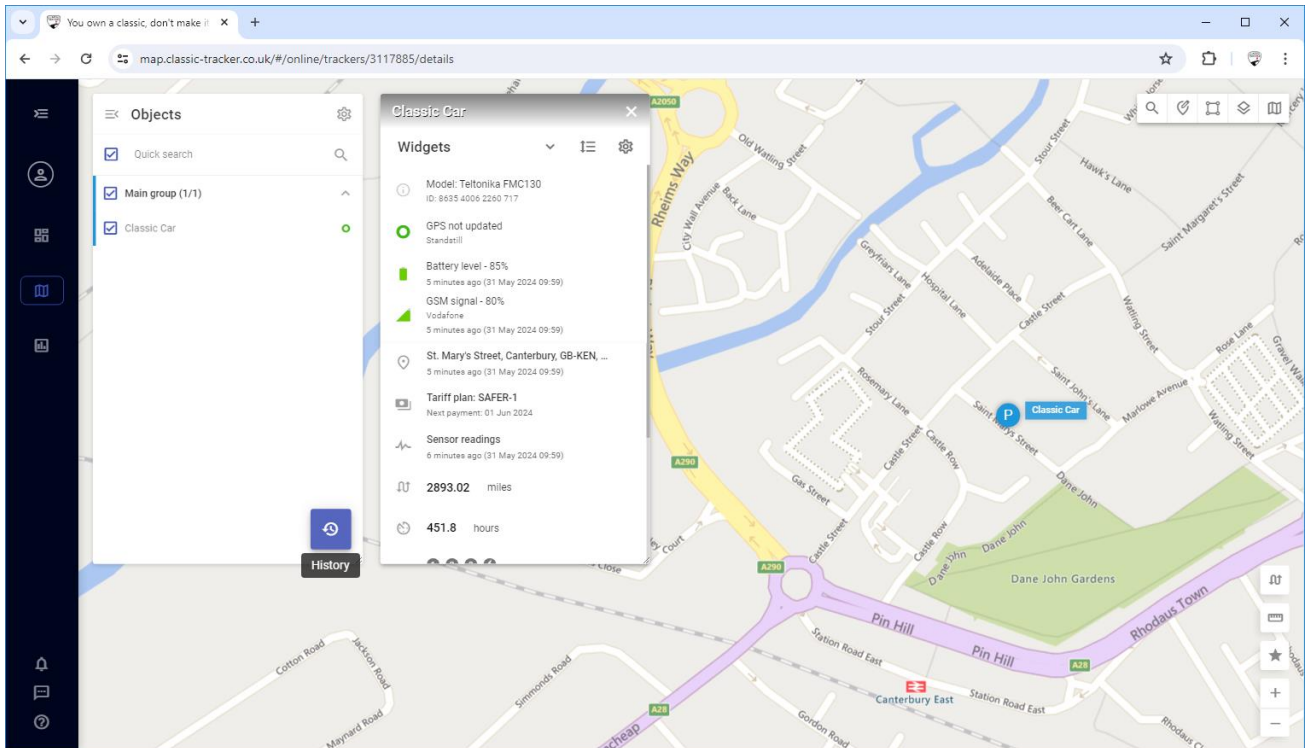
Alert	Description/Condition Met	SMS (Text)	Email	App	Web
SafeZone Exit	When vehicle passes outside boundary of pre-assigned SafeZone.		<input checked="" type="checkbox"/>	<input checked="" type="checkbox"/>	<input checked="" type="checkbox"/>
Over-speeding	(Not set as standard, but available if required)		<input checked="" type="checkbox"/>	<input checked="" type="checkbox"/>	<input checked="" type="checkbox"/>
Power Tamper	When the supply voltage to the tracker drops beneath a specific threshold (i.e. the tracker or vehicle wiring is being tampered with)	<input checked="" type="checkbox"/>	<input checked="" type="checkbox"/>	<input checked="" type="checkbox"/>	<input checked="" type="checkbox"/>
Low Battery	When the trackers internal battery passes below a particular threshold	<input checked="" type="checkbox"/>	<input checked="" type="checkbox"/>	<input checked="" type="checkbox"/>	<input checked="" type="checkbox"/>
Towing Alert/Dynamic SafeZone	When a vehicle is moved without the presence of vehicle ignition (i.e. towing). This function exploits a feature of our trackers called Dynamic SafeZone (geofencing). Wherever your vehicle is parked, the Dynamic SafeZone will remember the location before it enters into GPS sleep mode. If the vehicle is moved without ignition at anytime an alert will be sent.	<input checked="" type="checkbox"/>	<input checked="" type="checkbox"/>	<input checked="" type="checkbox"/>	<input checked="" type="checkbox"/>

The configuration of the alerts can be changed upon request.

## 1.5 Tracking and Events History

You can recall any number of journeys/trips (subject to a rolling 12 months of history), including events on those journeys using 'History'.

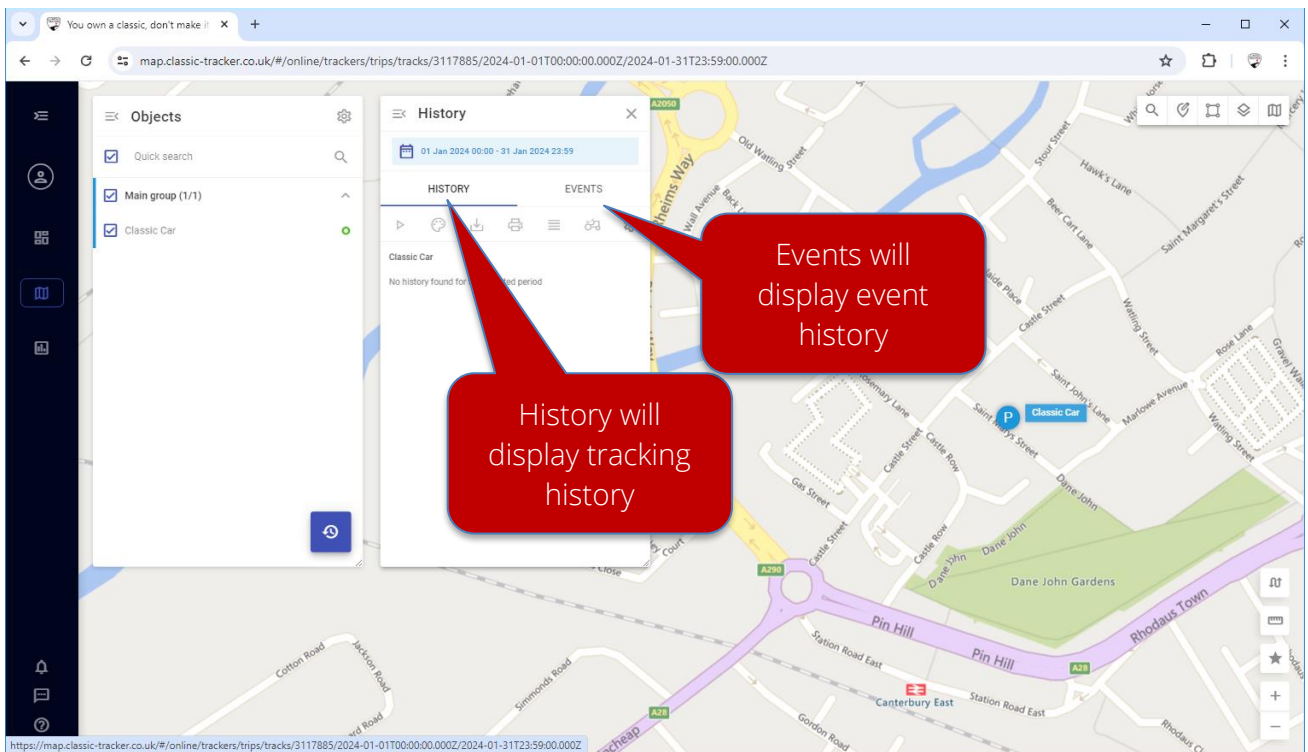
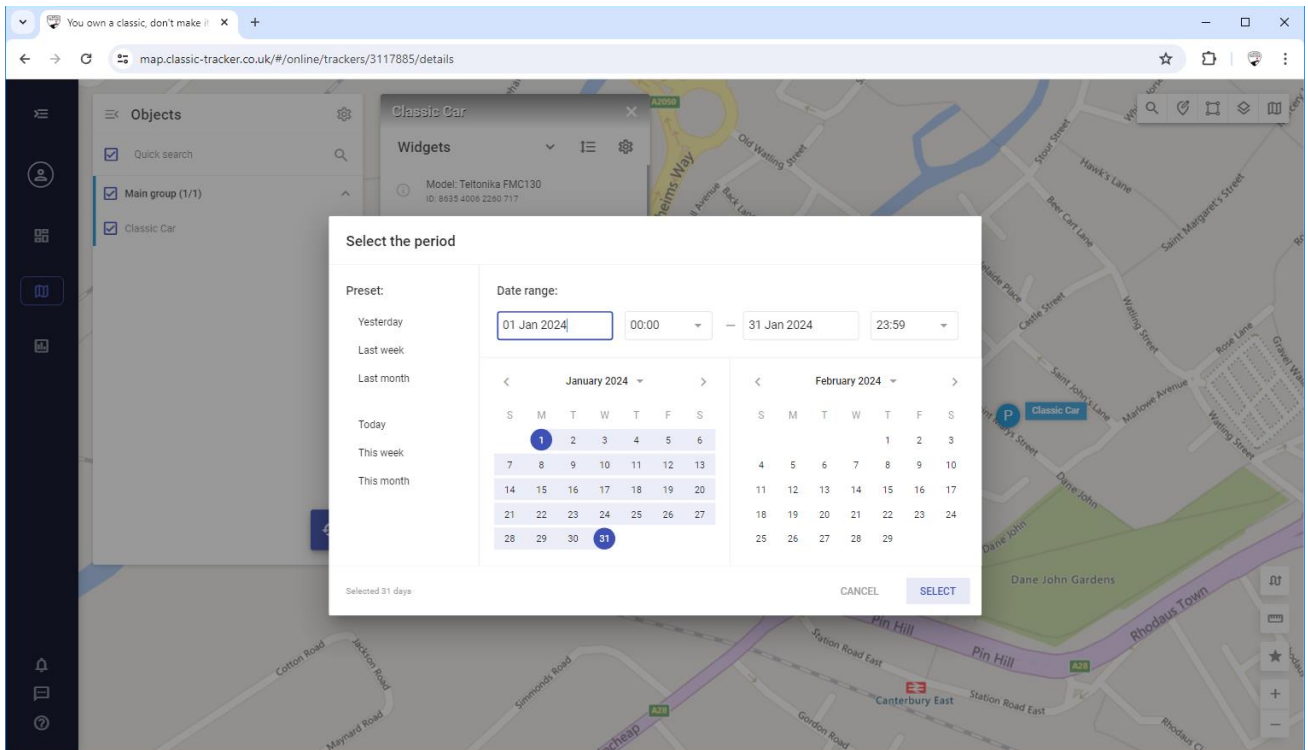
Select object 'I' info, then select 'History'



# Classic Tracker Quick Start Guide

v4.2 290925

Select the timeframe period, then click select:



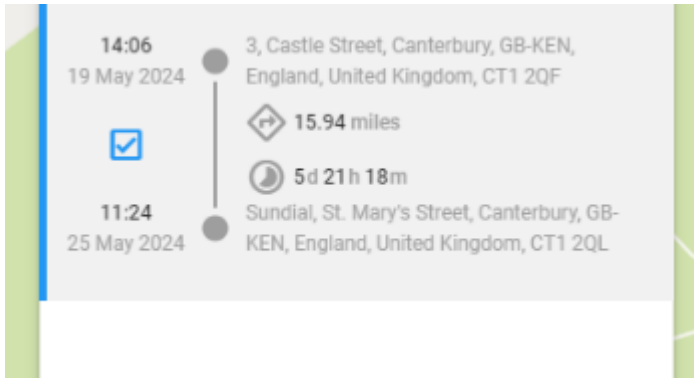
## Classic Tracker Quick Start Guide

v4.2 290925

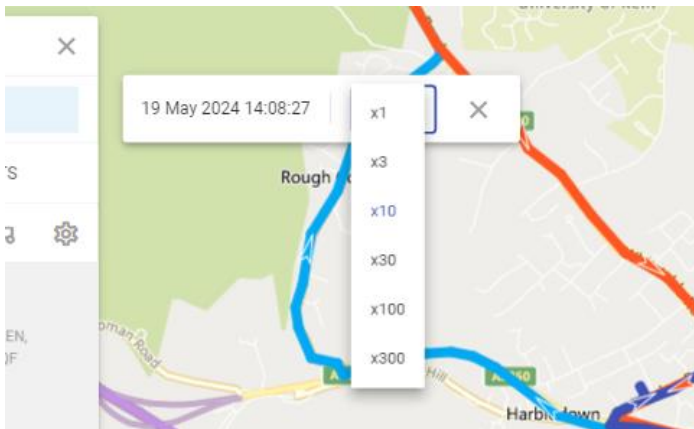
---

Select the track to display the history and replay the tracking history by clicking the triangular

 'Route Replay' button once the track is selected.



Route Replay is available at different playback speeds by selecting from the pull-down menu:

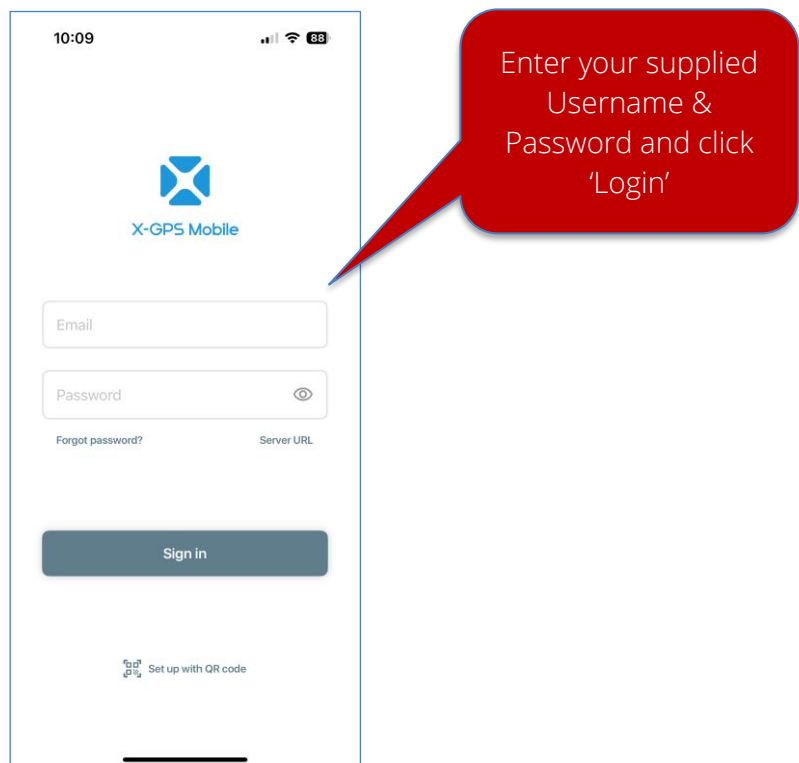


## 2. X-GPS Mobile App

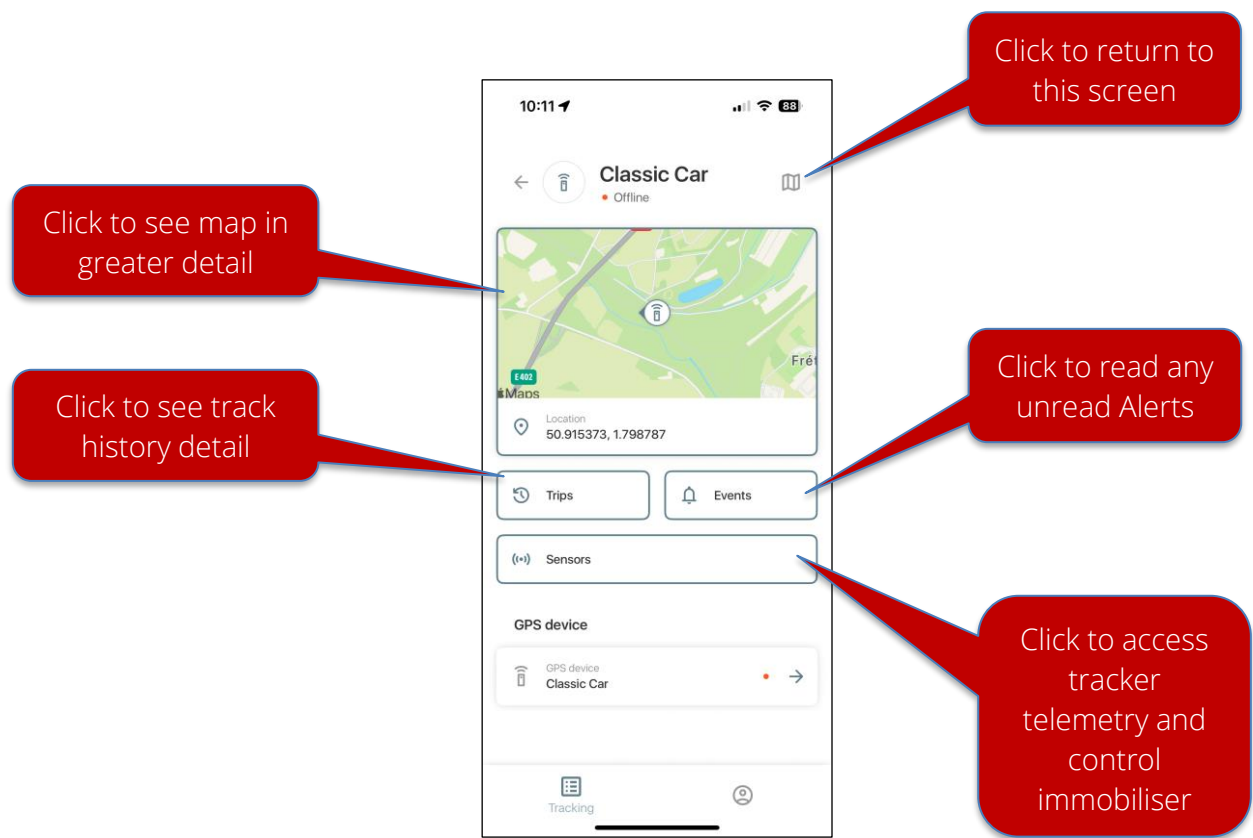
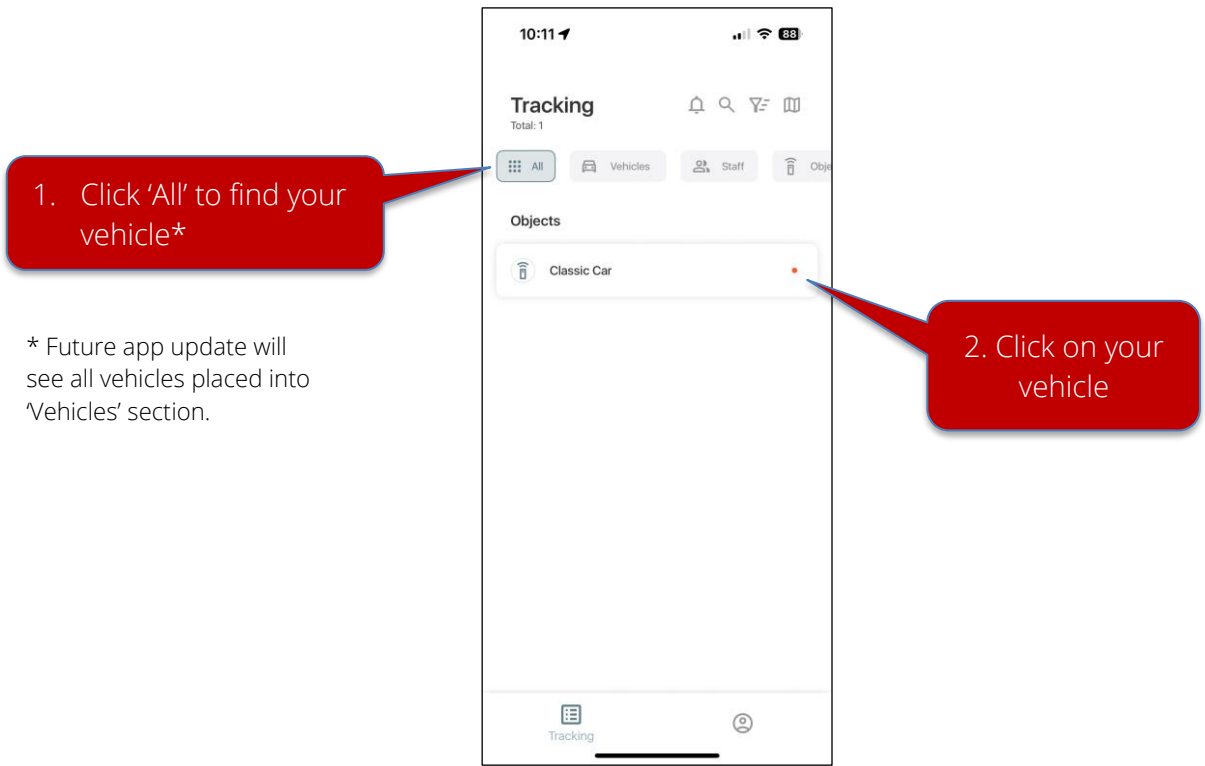
The functions of the Classic Tracker service can also be accessed on a handheld device. The app is called **X-GPS Mobile** which is available on either Apple iOS devices or Google Android. Please search and download from your device-store.

(following example is Apple iOS)

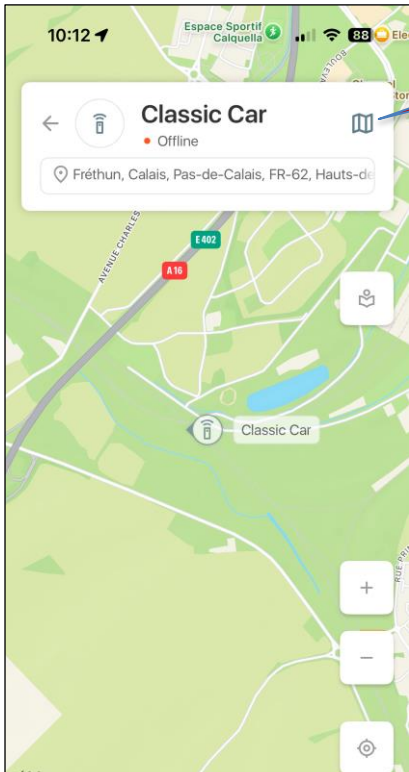
Once downloaded, run the app and log in using your supplied credentials:



Once logged in, to see your vehicle's location on the map, follow these steps.

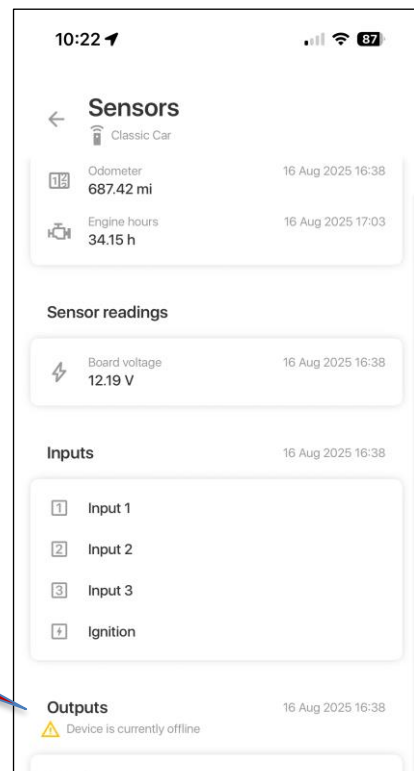


### Detail Map



Click to return to previous screen

### Vehicle/Tracker Telemetry







Scroll down to find 'Outputs' to control immobiliser (see next section)

### 3. Remote Control Vehicle Immobiliser

The remote immobiliser requires the installation of our optional immobiliser pack. Once connected, the remote switching can be controlled from either the web login or when logged into the mobile app.

#### Usage Notes:

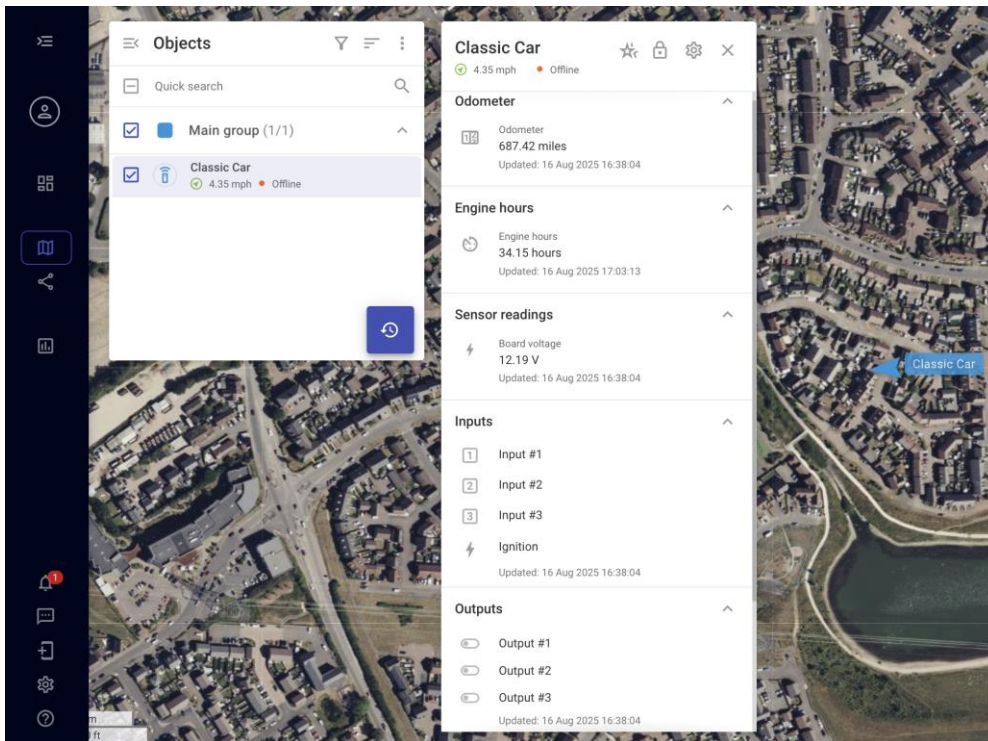
1. Energising the immobiliser relay will draw additional current from your vehicle battery and has been designed primarily for use during a live theft situation (i.e. vehicle is in motion).
2. Should you immobilise the vehicle using this function, then leave the car unattended for >15 minutes, upon return you will need to wait for the tracker to appear back on-line to re-mobilise your vehicle.
3. The tracker STATUS needs to be either Green or Blue to operate the switch (i.e. with the engine running or with vehicle in motion). To preserve the vehicle battery which powers the tracker, the tracker enters a GPS sleep mode after 5 mins of switching off the vehicle ignition, and without any movement to the vehicle. The vehicle immediately comes out of GPS-sleep when ignition is sensed, or the vehicle is moved.

	Location is fixed, device is online	Has GSM, Has GPS
 or 	Location is not fixed or device is online but entered into GPS sleep mode	Has GSM, No GPS
	Device is offline having entered into battery preservation mode.	No GSM, No GPS

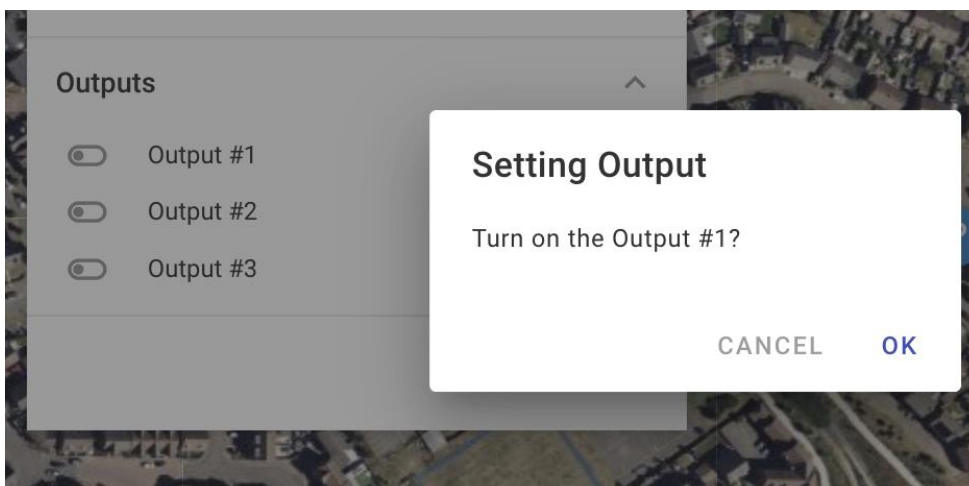
Please note the immediacy of the time to switch is very much subject to both the availability and quality of the GSM connection to the tracker.

### 3.1 CLASSIC TRACKER Web Portal – Remote Control

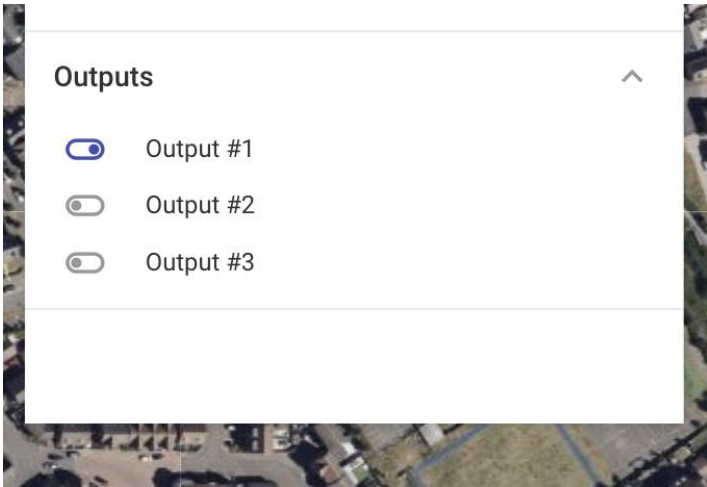
Once logged in on your desktop or laptop, on the Objects section, click in your vehicle and scroll down to find the 'Outputs' section.



Slide the Output #1 to the on position. You will be asked to confirm:



After a short while the switch will confirm switching has been successful by displaying in green:



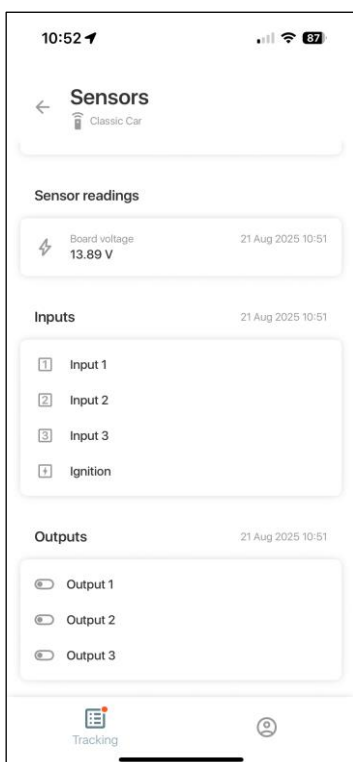
When switched to 'ON', the relay switched-circuit is open (vehicle immobilised).

Switching back to 'Off will return the relay to 'closed' (vehicle no longer immobilised).

### 3.2 Mobile App (X-GPS Mobile) - Remote Control

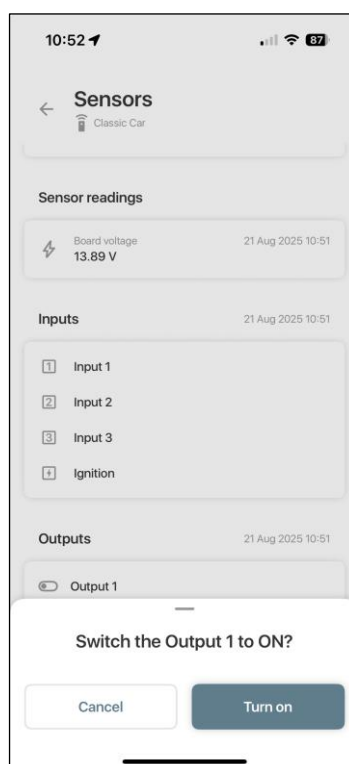
For the mobile app, find the vehicle you wish to control, then access the 'Sensors' section. Scroll down to 'Outputs'.

#### Sensors Section



#### Immobilise

The immobiliser is controlled by the 'Output 1' switch. Slide the Output 1 switch to the RIGHT. You will be asked to confirm the operation:



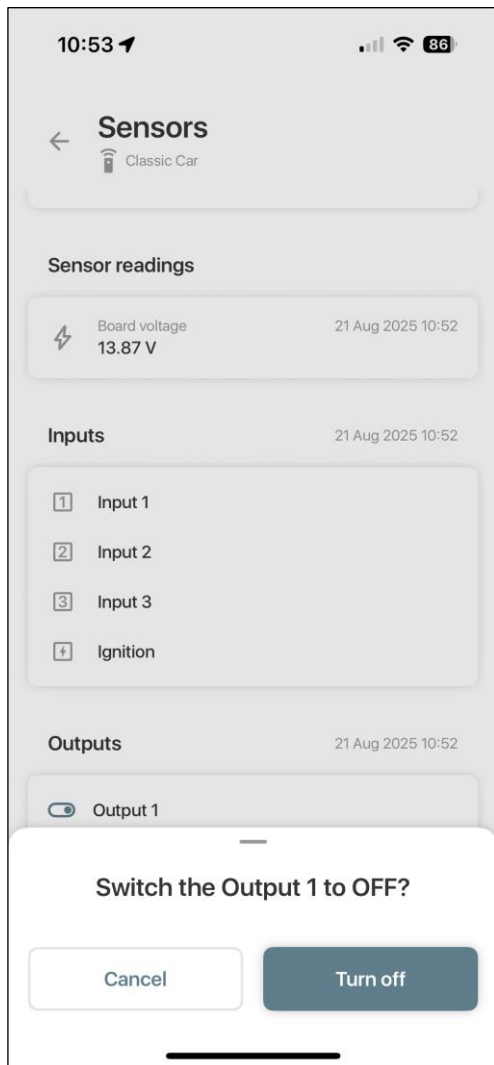
#### Immobiliser Status

When successfully immobilised, the switch will appear on the RIGHT-hand side:



### Re-Mobilise

Switch back to re-mobilise the vehicle. Slide the Output 1 switch to the LEFT. You will be asked to confirm the operation:

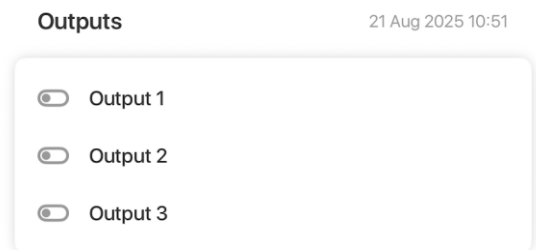


When switched to 'ON', the relay switched-circuit is open (vehicle immobilised).

Switching back to 'Off will return the relay to 'closed' (vehicle no longer immobilised).

### Immobiliser Status

When successfully re-mobilised, the switch will appear on the LEFT-hand side:



## 4. Miscellaneous

### 4.1 Password

You are able to change your password in the 'Accounts' section found at the top left hand user-icon when logged in on a web-browser.

If you forget your password, you can request a new one by clicking on Forgot Password on the main login screen. Follow the instructions to receive a new password.

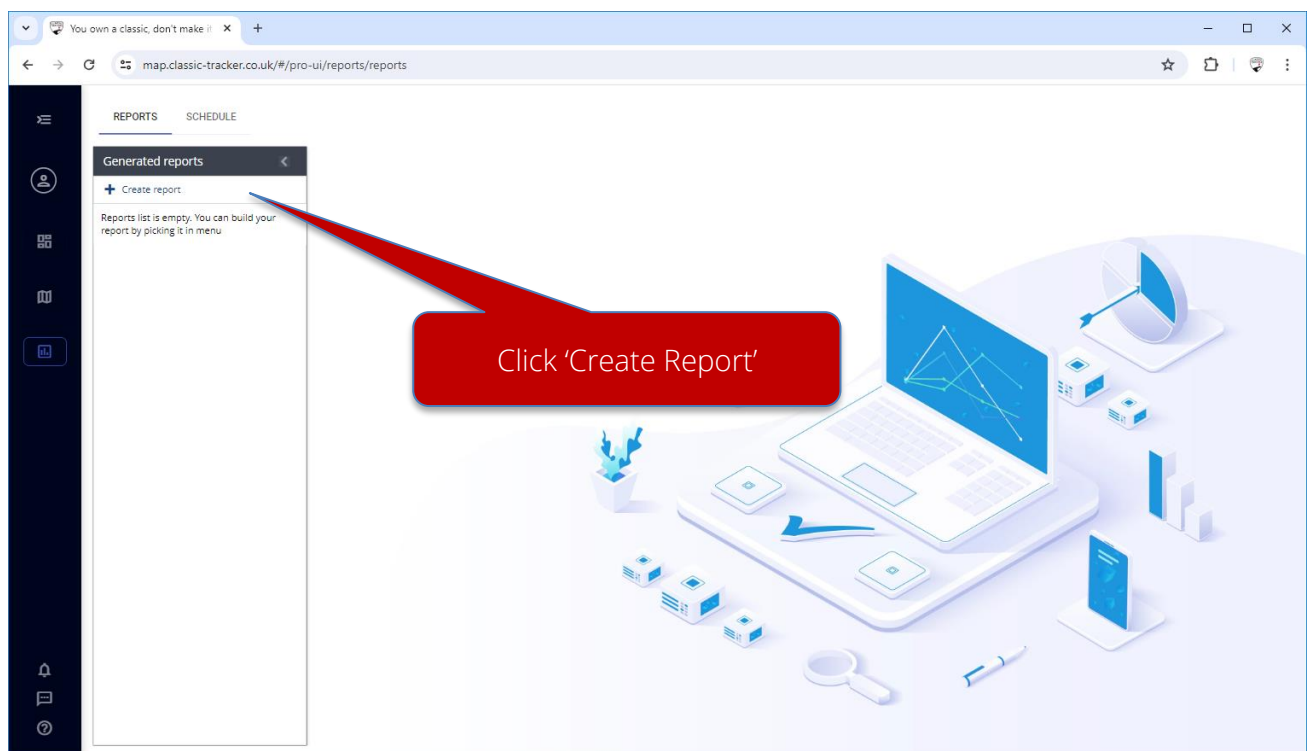
In some instances, your web-browser may require you to empty the browser cache to recognise the new password.

In the event of login difficulties, please contact us.

### 4.2 Reporting

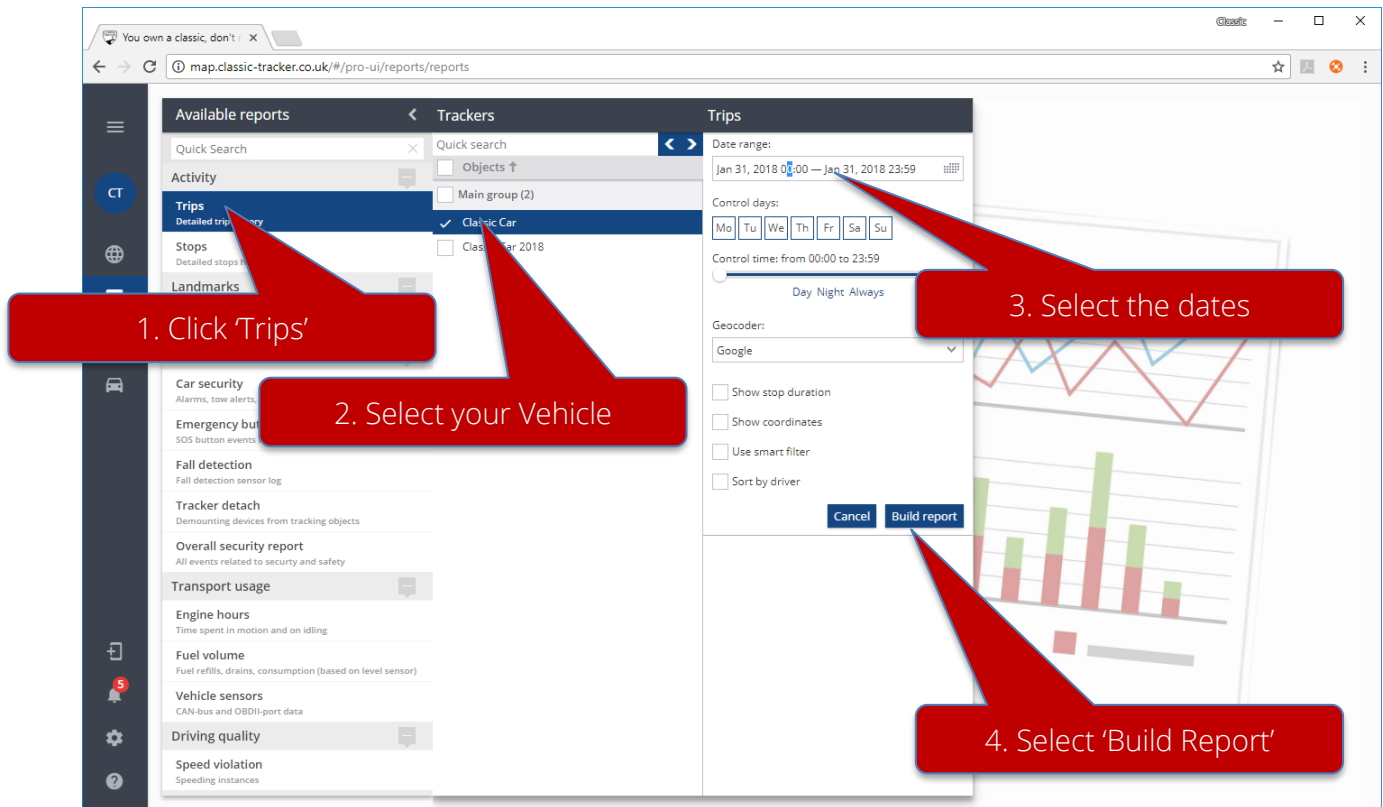
As the Classic Tracker service deploys a professional fleet management back-end, there are a number of additional features available. Many have been disabled, however the ability to create trip reports is still enabled.

Access the report menu from the menu bar on the left-hand-side:



### 4.2.1 Trip Report

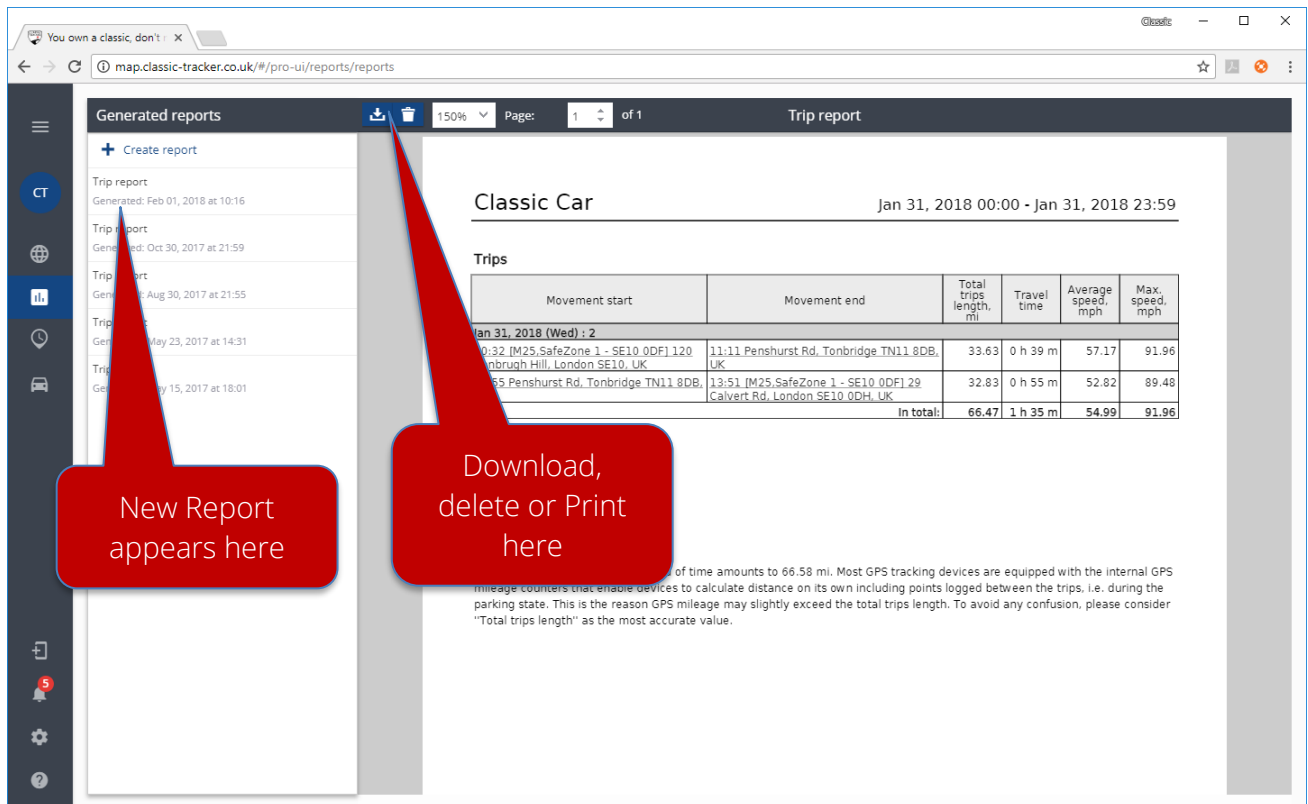
Note that trip data is stored for a maximum of 12 months rolling history.  
To build a Trip report



The report will be generated. Thereafter you can view on screen or download as a PDF for sharing or printing.

# Classic Tracker Quick Start Guide

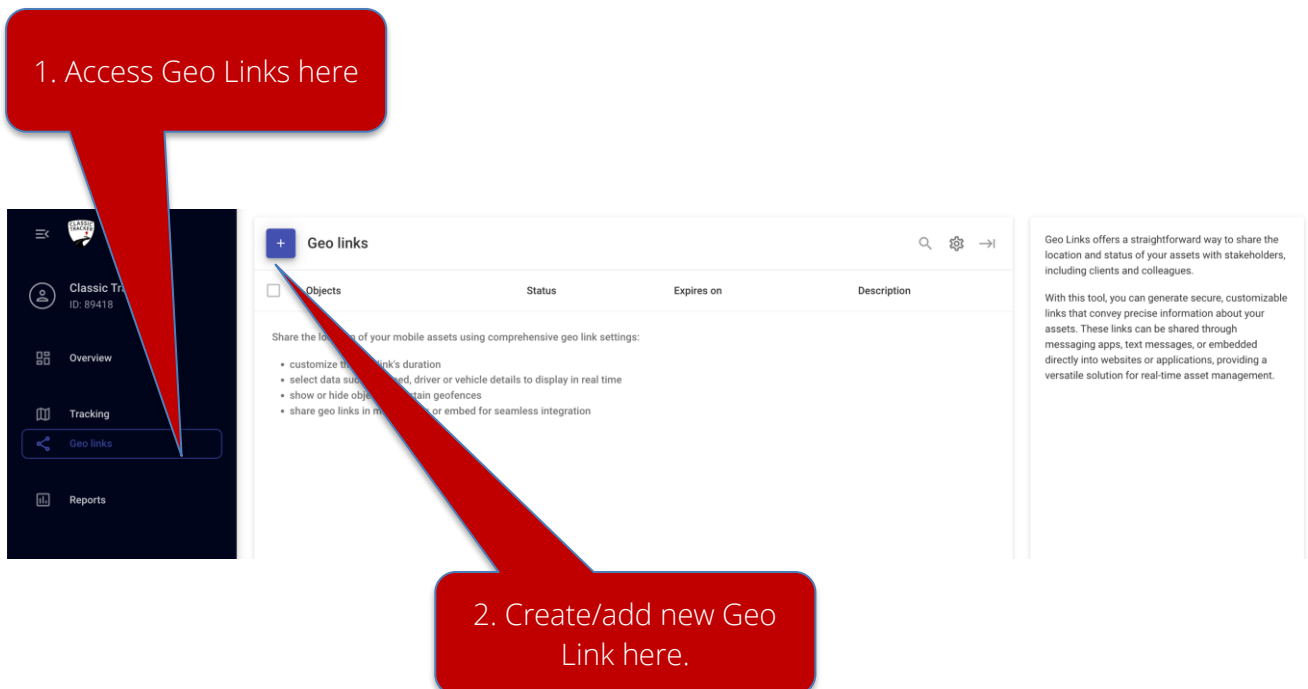
## v4.2 290925



### 4.3 Geo Links

This function allows you to share the location of your vehicle from a single URL (web address). Please contact us if this feature is not available via the web-browser login.

The Geo Link requires set up from the web browser log in as follows:



**Create new geo link** ×

Description

Description (optional)

Select assets for location sharing

[+](#) Add object

Map settings

Map: OSM | Trace history view: Without trace | Additional options: Autoscale, Show icons | Track everywhere

Show on map

POI | Geofences

Limited validity duration

CANCEL CREATE

3. Add object (your vehicle)

**Create new geo link** ×

Description

Description (optional)

Select assets for location sharing

Object: Classic Car | Label: Classic Car

Map settings

Map: Bing | Trace history view: Without trace | Additional options: Autoscale, Show icons | Track everywhere

Show on map

POI | Geofences

Limited validity duration

1 hour |  1 day |  1 week |  1 month |  Custom

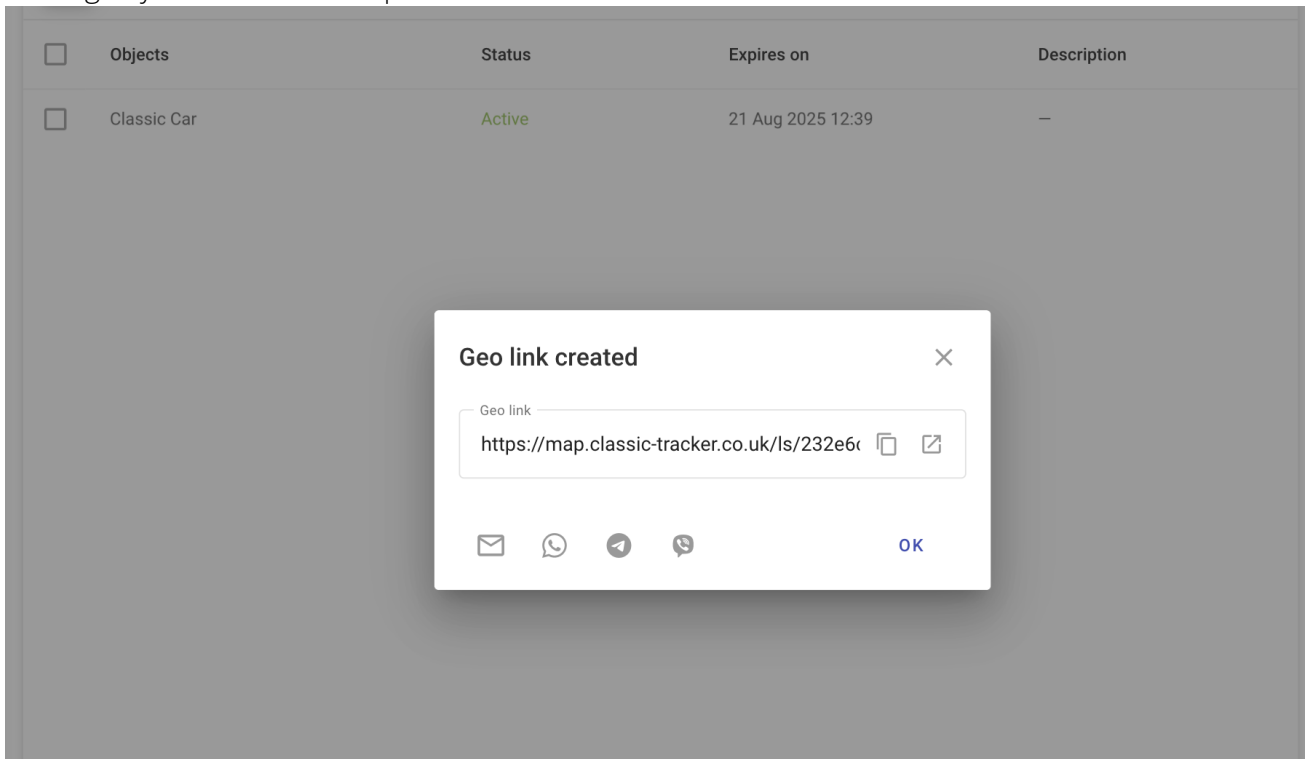
CANCEL CREATE

4. Select which map set to have the Geo Link displayed

5. (optional step) To restrict the duration, select here

6. Click 'Create'

The Geo Link (URL/web address) is now created. The URL (web address) can be copied, shared clicking any of the available options.



#### 4.4 GPS Wandering (false alerts or incorrect alert timing)

A phenomenon known as 'GPS wandering' can occur and present itself in several ways. Either or combination of the following can result in either or both delayed and/or incorrect alerts.

- *GPS (satellite lock/accuracy)*: the location reports incorrectly due to poor GPS signal (the tracker thinks it is somewhere when it is not). When this happens, the tracker will report a false alert as it believes it has exited the SafeZone or has been towed.  
Any tracker's ability to receive data from as many satellites as possible (to increase location accuracy) will be challenged when the car is underground or in a good quality garage with limited or no visibility to the sky. Additionally, this is worsened as the tracker is concealed within your car, within its storage location, which only worsens the problem.
- *GSM (infrastructure communication)*: Our trackers use a multi-operator internal SIM card. It will therefore always attempt to connect to the strongest available GSM signal. Whilst it is moving, this is a benefit as the tracker is able to provide best-possible communications. However, when a vehicle is parked with the tracker at a location between two different operator masts, it will continually attempt to reassess received signal strengths from either mast. During this negotiation phase, its ability to report will be delayed for as long as it takes for the negotiation to conclude. This is worsened if a tracker is located between three different operator masts.  
If a car enters and is parked in a location without GSM availability, it will only be able to report its' last known status update. When the vehicle re-enters GSM availability the alert will subsequently appear delayed.

### **Status Reporting**

Please note that the speed of update on any of the information presented to a user is dependent on several factors outside the control of Classic Tracker. These include, but are not limited to:

- Change in operational status of the tracker (e.g. returning from a long period in GPS sleep mode requires time to find/update GPS position);
- Quality (in addition to strength) of the GSM signal received by the tracker and the trackers' proximity to GSM base-station/mast(s);
- Data latency to/from the device based on GSM availability and contingency (the responsiveness, the speed and quality of available data communications based on the number of GSM users connecting to the particular GSM base-station at any point in time);
- Quality of the received GPS signal. More challenged with vehicles parked underground or in secure garages for long periods;
- quality of internet connection/data latency to/from your desktop/laptop/mobile device.